



DIOCESE OF BRISTOL

TRANSFORMING CHURCH. TOGETHER.



VICAR

CHRIST
CHURCH
CLIFTON



INVITING EVERYONE TO FOLLOW JESUS

Thank you for your interest in
Christ Church Clifton.

Our prayer is that this profile
will help you hear God's call on
whether to join us and play your
part in our mission for Jesus in
our parish, the city of Bristol
and beyond.

A Message from the Acting Bishop of Bristol	Page 3
Area Dean's Message	Page 4
The Diocesan Strategy: Transforming Church. Together	Page 5
Being Clergy in the Diocese of Bristol	Page 6
Who We Are	Page 8
Discover Life and Ministry in Clifton	Page 11
Our Gatherings and Worship	Page 21
A Church Growing Younger	Page 13
Life at Christ Church	Page 15
Our Community Partnerships	Page 16
Join Our Staff Team	Page 17
Finance	Page 18
Safeguarding	Page 19
The Vicarage	Page 20
Christ Church in Numbers	Page 21
Person Specification	Page 22
Next Steps	Page 24



CONTENTS

I am delighted that you are considering the role of Vicar of Christ Church Clifton. I hope this profile describes a Diocese and Parish within which your ministry can flourish.

This profile is full of life and shows the significant and positive impact Christ Church has in Clifton, Bristol and in the life of our Diocese.



FROM THE ACTING BISHOP OF BRISTOL

The next Vicar of Christ Church Clifton steps into a senior ministerial role full of opportunity which also comes with significant expectations and demanding responsibilities. We are therefore looking for an experienced incumbent with a proven track record and exceptional leadership gifts.

The Diocese of Bristol is a great place to serve as a vicar, with a strong commitment to supporting and empowering local church leaders. Through the initiatives and investment of our mission plan – Transforming Church. Together – we collaborate in following Jesus, serving others and transforming communities.

The Diocese is listening deeply and shaping a shared vision for a Church that is for the good of all. There is a real trust in local clergy and congregations to lead in ways that are authentic to their context. We prioritise clergy wellbeing and have a dedicated coaching network for clergy, wellbeing support, and leadership development.

The clergy of Christ Church Clifton are fully engaged in the life of Bristol West Deanery and the Diocese of Bristol. I am thankful for the ways in which they enrich our shared ministry.

Christ Church Clifton is a strong and vibrant church with a solid foundation – it holds exciting potential for even greater growth and impact in the community.

Thank you for your consideration, with our prayers for your discernment.



+ Neil Swindon

THE RT REVD NEIL WARWICK
SUFFRAGAN BISHOP OF SWINDON
ACTING BISHOP OF BRISTOL FROM 2 SEPTEMBER 2025

Welcome from the Deanery of Bristol West!

Thank you for considering joining us in the Deanery of Bristol West and considering the role of Vicar at Christ Church Clifton. This is a significant role in providing leadership and direction for a 'Word and Spirit' church that attracts those searching and journeying from across Bristol, as well as within the heart of Clifton.

As you will read in the profile there are several features that increase this significance: the worshipping community has shaped four clear values that informs all that they do; they adopt a shared approach to leadership; and are part of the New Wine Network. The church family is made up with young professionals, university students as well as older generations. This is an active, busy church, led by the Holy Spirit.

The Deanery of Bristol West covers a large area from Avonmouth in the Southwest to Alveston in the North, stretching across from Clifton to the Severn Estuary, and all places in between. We represent parishes and churches from diverse socio-economic contexts, and a wide breadth of Church of England traditions. The Deanery also contains the Avonside Mission Area (ASMA). Chapter meets monthly and includes many of our Self-Supporting Ordained Minister (SSM) and Permission to Officiate (PTO) colleagues, it is a supportive and encouraging group of people. We look forward to welcoming the new incumbent to the Deanery and to our regular Chapter meetings - where lunch is shared and enjoyed, and topics discussed.

We hope you will feel enthused and inspired by all that is happening here at Christ Church Clifton and the exciting potential and opportunities that this parish has in the immediate future. These opportunities align with the Diocesan 'Transforming Church. Together' strategy which invests in the way we work together; reimagining the way we form collaborative relationships which bring more people to Christ and more sustainable social change.

We pray that, as you consider Christ Church Clifton, this Deanery and Diocese, you will discern God's calling for your ministry.

REVD CHARLES SUTTON,
AREA DEAN, BRISTOL WEST

AREA DEAN'S MESSAGE

TRANSFORMING CHURCH. TOGETHER began in 2021 with listening to God and to one another.

From these conversations, four guiding values were discerned. Creativity, Openness, Bravery and Generosity inspire a vision and strategy which seeks transformation across the whole Diocese by the grace of God. Each Deanery and Benefice is encouraged to work out what TC.T means in their particular context – the same principles can inspire and develop mission in very different ways.

With major financial support from the national church, the Diocese is offering support and resources in key priority areas of ministry.

These include:

- ♦ Enabling parishes to discern and implement vision
- ♦ Help for benefices with evangelism and discipleship
- ♦ Support for teams running New Christian Communities
- ♦ Volunteer training
- ♦ Supporting parishes with the care and improvement of church buildings
- ♦ Investing to become a Net Zero Diocese by 2030
- ♦ Addressing the church's history on racial justice and diversity
- ♦ Developing partnerships between the church and local communities
- ♦ Investment in under 18s work
- ♦ Investment in priority community parishes, church plants/grfts and Mission Areas
- ♦ Clergy coaching and wellbeing

This is a huge and exciting vision, which we can only attempt in the strength Jesus supplies and with the help of the Holy Spirit.

THE DIOCESAN STRATEGY

DIOCESAN SUPPORT SERVICES

The Diocesan Support Services (DSS) exist to support the mission of the church. Based at the Diocesan Office to the north of Bristol and made up of 90 employees and volunteers, the DSS serve ministers, parishes and schools by expressing vision, strengthening relationships, empowering people, maximizing resources and developing structures. We offer training, consultancy and advice. We manage many structural elements of the life of the Diocese.



The Diocese of Bristol is presided over by the Acting Bishop of Bristol and Suffragan Bishop of Swindon, the Right Reverend Neil Warwick. The Venerable Christopher Bryan is the Archdeacon of Malmesbury and the Venerable Becky Waring is the Archdeacon of Bristol. The Reverend Adam Beaumont is the Associate Archdeacon.



Pastoral care of clergy is primarily the responsibility of the Bishops, and is supported by the Archdeacons, Area Deans and the Clergy Wellbeing Officer. Alongside any one to one issues as they arise, an annual clergy wellbeing survey enables themes affecting clergy and their families to be identified and addressed as appropriate.

There are additionally many ways in which clergy are supported in their roles. Every incumbent is invited to work with a coach as part of the Transforming Church. Together strategy. The Parish Development Officer is able to work alongside clergy where support is needed to develop a focus for vision or mission. For those in positions of first responsibility additional targeted support and development is offered. The Mission and Ministry team offers regular ministerial development for clergy and laity, and the Archdeacons with the support of the TC.T team, offer a Church Teams Day each year, primarily aiming to resource parish officers in their roles.

The Property team is working through a programme where every parsonage house will reach carbon net zero, which, as well as reducing carbon emissions should also reduce utility costs. They are also on hand to support clergy with any issues with their homes.

There could be occasions where unexpected financial pressure arises, and the Archdeacons are able to signpost clergy to appropriate means of support, as well as accessing a discretionary fund where necessary to alleviate financial concern. These situations are responded to in confidence and clergy are strongly encouraged to contact the relevant Archdeacon if such circumstances arise.

BEING CLERGY IN THE DIOCESE OF BRISTOL



INVITING EVERYONE TO FOLLOW JESUS

Welcome to Christ Church Clifton — a vibrant, Word-and-Spirit-filled community in the heart of Clifton, Bristol.

We're a family who love Jesus and are learning to follow Him together, united in our mission to see heaven break into everyday lives and bring transformation to people, culture, and our city.

At the core of our life together are four values that shape everything we do:

- ♦ **Encounter** – intentionally seeking God's presence
- ♦ **Family** – growing together in authentic community
- ♦ **Generosity** – showing God's love in action
- ♦ **Transformation** – pursuing Kingdom change in every area of life

These values guide our worship, relationships, and mission.

We're not perfect, but we're expectant, trusting that as we follow Jesus together, He will continue to move powerfully among us.

We're passionate about **welcoming everyone** and helping each other live out **God's Word** in the real world. We're rooted in the Bible and value clear **orthodox biblical teaching**. We long to be more **empowered by the Holy Spirit** every step of the way.

We hold to a traditional view of marriage and do not offer the Prayers of Love and Faith. We welcome women and men in ministry, teaching, and leadership. We value being part of the Church of England Evangelical Council (CEEC) and our clergy are members of the Diocesan Evangelical Fellowship (DEF).

WHO WE ARE

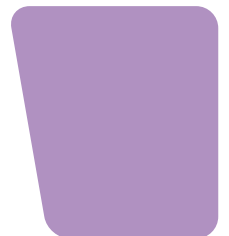
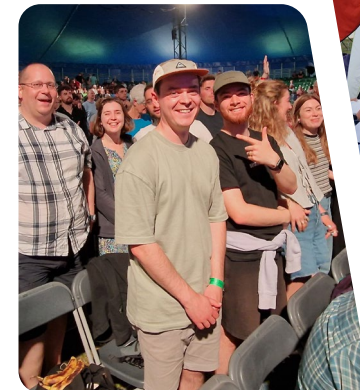
In all our **worship, prayer, and teaching** we seek to be **led by the Holy Spirit**. We want to make space for God to speak, move, and transform – whether through prophetic words, prayer ministry, or spontaneous Spirit-led moments. Our gatherings are full of warmth, joy, and sometimes a little holy messiness, and we long for more! Worship in music and song is a major part of our gatherings and we have a small, committed, team of musicians, singers and worship leaders which we would like to see grow.

We value being part of the **New Wine Network** – a family of churches rooted in the Word of God and seeking to follow the Holy Spirit in every area of life. Over the years, we've loved hosting New Wine events and attending the New Wine Festival each summer.

We especially value a **shared approach to leadership**. The members of our Senior Leadership Team (Incumbent, Associate Vicar, Assistant Minister, Operations Manager), whilst holding different responsibilities, work collaboratively in setting, communicating and enabling the vision and direction of the church.

They are supported in this work by the Churchwardens, Standing Committee, and PCC.

We're a beautifully **diverse family**: people of all ages and stages, gathered from across Bristol and beyond.



More recently we've been delighted by the growth in our cultural diversity as we seek to welcome all and would love to see this develop even more. Regardless of whether people are brand new to faith, just curious, or all-in for Jesus, there's a place for them at Christ Church. We're intentional about building a church where everyone feels **seen, known, and invited to grow**.



At Christ Church, we believe that **every believer is called to mission** - not just overseas or on a platform, but in the everyday spaces where life happens. Whether in a classroom, office, café, or kitchen, we want to equip one another to shine for Jesus with courage, wisdom, and love.

Through our **Small Communities** and across the life of the church, we're hungry for more stories of the Holy Spirit at work - nudging us toward bold steps of obedience, quiet acts of faithfulness, and surprising opportunities to witness. We're praying that these "God stories" become the norm, not the exception.

Our calling is big: **inviting everyone to follow Jesus**. We're not perfect at it - but we're committed, expectant, and ready to grow together in boldness and faith. With God's help (and one another), we're embracing the adventure.



With this in mind, we see huge potential in the growing number of **young professionals and university students** among us. They bring fresh energy, honest questions, and a hunger for meaningful community and Spirit-filled faith. A year ago we appointed a pastor to lead in this area, and we're already

seeing exciting growth. We're loving the journey of walking alongside them and can't wait to welcome many more.

At the same time, we believe **older generations** play a vital role - and we deeply value the wisdom, stability, and the fruit of long obedience that they bring. They help anchor our life as a church family and model what it means to follow Jesus over a lifetime and we want to see our ministry and mission to this demographic continue to thrive and grow.

We have a strong core of **families with young children** and a thriving **children's ministry**. We are actively seeking to appoint a full-time Children's and Families' Pastor to help lead this work. Our **youth ministry** is developing - with regular gatherings, school engagement, and growing Christian Unions - but there's still space to grow. We long to see more of our church family of all ages investing in the **discipleship** of the next generation of **children, young people, students, and young adults**.

Together, across all ages and stages, we're discovering what it means to be a **mission-shaped family** - helping each other follow Jesus and live for Him in Bristol and beyond.

Underpinning all this, we desire to be a **praying church** - not just in theory, but in practice. That requires prayer to be the heartbeat of everything we do. From our Gatherings to our serving and ministry teams to our Small Communities, we want prayer to be the engine that drives it all. We are making exciting steps towards this and we long to see this become the norm throughout our church family.

In short, **we want to be a growing, Spirit-filled, Jesus-centred family** learning to love God, love each other, and love Bristol. We want to see more people **find Jesus and follow him wholeheartedly**.

We want to see our city transformed.



Welcome to Clifton Village – a stunning and historic corner of north west Bristol, just 1½ miles from the city centre and close to the University of Bristol. Known for its elegant Georgian architecture, landmark views (like the world-famous Clifton Suspension Bridge), and bustling local culture, Clifton blends heritage with modern vibrancy.



With a population of around 9,000, Clifton is home to families, students, professionals and retirees. It's an area of affluence, yet full of social diversity. Christ Church plays a central role in this community – a church that's both rooted locally and drawing people from across the city and beyond. Our links with local schools, including Christ Church Primary and Clifton High School, give us real opportunities to support and shape the next generation.

BUILDINGS THAT SERVE MISSION

Our buildings are not just heritage assets – they're tools for ministry:

- ♦ **Christ Church Clifton** – A magnificent Grade II* listed building with a spire visible across the city. Internally reimagined for flexibility and accessibility (including a fully refurbished crypt and lift), the space is beautifully suited to both vibrant worship and community outreach. The removal of pews has created a dynamic, adaptable environment. We have a 24/7 prayer room (Jacob's Well), where individuals and groups book time to meet with God. Christ Church is open once a week as a workspace – providing free coffee and WiFi!
- ♦ **Linden Gate** – A four-storey Victorian terraced house containing our church office, meeting rooms, and three rental flats that generate helpful income.
- ♦ **60 Clifton Park Road** – 4 bed town house, currently housing our Associate Vicar.
- ♦ **Vicarage** – 6 bed Victorian semi with garden and garage.



DISCOVER LIFE AND MINISTRY IN CLIFTON

A CHURCH ROOTED IN WORD AND SPIRIT

We are an evangelical church, passionate about following Jesus, engaging with the Word and living in the power of the Holy Spirit. We come together for worship, teaching and ministry at three distinct weekly gatherings.

The 8 | Sunday 8am (Holy Communion)

A peaceful, liturgical, said service with a faithful community of around 20–30 who gather early to worship, hear the Word, and stay to connect over refreshments.

The 10 | Sunday 10am

A joyful, intergenerational service with 120–170 adults each week and around 40 children. With modern, vibrant Spirit-led worship, engaging Bible teaching, testimonies, prayer ministry, and room to respond to the Spirit, this is a growing community alive in faith. We livestream the service and make space for children to lead and engage in worship.

The Midweek | Wednesday 11am

A close-knit and growing community of 40–60 (in person and on Zoom), characterised by warm fellowship and pastoral care. Primarily older adults, they actively support the church's wider mission – praying for younger members and building meaningful intergenerational bonds.

(The combined weekly Sunday attendance in October 2024 was 192 adults and 43 children, with another 46 at midweek)



OUR GATHERINGS AND WORSHIP

INVESTING IN THE NEXT GENERATION

At Christ Church Clifton, we're joyfully committed to nurturing children, youth, students, and young adults in their walk with Jesus. From toddlers waving flags in worship to students leading prayers, our young people aren't just the future - they're a vital part of the church today.

We believe passionately in being an intergenerational family, where faith is passed from one generation to the next, and everyone has a role to play.

CHILDREN'S CHURCH (C4)

Each Sunday during our 10am gathering, our children meet to explore faith in a fun, Spirit-filled environment. With worship, prayer, a Bible message, crafts, and the occasional sketch, children are led by a team of trained volunteers.

Our children meet in three groups:

- ♦ Pandas (under 3s) ~ 10 children
- ♦ Dolphins (ages 3-6) ~ 16 children
- ♦ Eagles (ages 7-11) ~ 14 children

PATHFINDERS (SCHOOL YEARS 7+)

Meeting during the 10am service, Pathfinders is a dynamic and welcoming group for older children and early teens. The group explores faith through Bible study, prayer, and fun - from games to BBQs.

One young person put it best:

"It's a great time to meet with friends, learn about Jesus, play games and share life stuff."

With around 12-16 attending weekly, it's a place of deep friendship and faith discovery.



A CHURCH GROWING YOUNGER

MEETING POINT (SCHOOL YEARS 8-12)

Meeting on Wednesday evenings, Meeting Point bridges the teen years with energy, creativity and depth. The group dives into prayer, Bible study, spiritual disciplines and worship – often using imaginative methods and interactive experiences. They also receive encouragement to witness in their schools, many of which now have thriving Christian Unions led by our young people.

JUNIOR YOUTH CLUB (SCHOOL YEARS 5-8)

JYC offers a safe, screen-free space for pre-teens to build friendships. Meeting fortnightly on Friday evenings with around 12-18 attendees, the group enjoys games, tuck shop, memory verses and plenty of fun.

IN THE SCHOOLS

Christ Church Clifton has a growing presence in local schools. We have a strong and trusted relationship with Christ Church Church of England Primary School, with clergy dropping in weekly for staff support and occasional collective worship.

Our Schools Pastor has also helped start and support Christian Unions in secondary schools across the city, equipping our young people to lead and share their faith boldly.

Twice a year, primary schools visit for immersive Christmas and Easter experiences, and we love opening our doors to them.



STUDENTS – REBUILDING AND RELEASING

A core of 10 students now meets weekly - growing in faith and committed to living for Christ in the heart of Bristol's university community. This is an area for growth.

20S AND 30S – ROOTED, SERVING, FLOURISHING

Our 20s and 30s community is one of our greatest strengths. With around 90 members, this group is vibrant, growing and deeply committed. Many serve across every area of church life.

The group is largely self-led, supported by staff. They gather regularly for socials, Bible study, and fellowship – and we're occasionally launching new small communities to meet growing interest.

Whether just out of university or starting a young family, there's space here to belong, grow, and lead.

SMALL COMMUNITIES – THE HEARTBEAT OF CONNECTION AND GROWTH

Our small communities provide a vital bridge from our larger gatherings to intimate spaces where faith deepens and friendships flourish. Our desire is to grow in number from the current 15 - creating more places where every member of the church can find practical support, encouragement, and prayer.

SENIORS MINISTRY – VALUED, ACTIVE, AND GROWING

Our thriving seniors ministry centres around a warm midweek community. Our seniors are well represented at all our weekly gatherings and in our small communities.

From weekly gatherings to social events like lunches and theatre trips, friendships are strengthened and faith is nurtured.

SOME OF OUR OTHER ACTIVITIES

- ♦ Two toddler groups
- ♦ Men's breakfasts monthly and Mighty Women of Christ Church meetings
- ♦ Weekly Ukrainian Hub
- ♦ Eco Team
- ♦ Annual Christmas Market (over 800 attending from the local community)



LIFE AT CHRIST CHURCH



SPEAR PROGRAMME - EMPOWERING YOUNG ADULTS

We host the SPEAR programme, offering intensive coaching and mentoring to young adults (16–24) not in work or education. This 6-week course, held in our crypt, is followed by a year of ongoing support. Our SPEAR coaches are supported by the Christ Church staff team, a board of Trustees, and overseen by Resurgo.

Learn more at spear-bristol.org

CHRIST CHURCH CLIFTON PRE-SCHOOL - A LEGACY OF CARE

Since 1976, our church crypt has been home to a term-time pre-school, independently run but linked to Christ Church Clifton.

Discover more at christchurchcliftonpreschool.org.uk

LOCAL AND GLOBAL MISSION - LIVING OUT OUR FAITH

Locally, we support projects like the Bristol North West Foodbank and a monthly homeless breakfast run in the city centre. We partner with charities such as Mullers, InHope and the Bristol Schools Connection, and host groups welcoming overseas visitors for English conversation, friendship, and Bible study.

Globally, our links stretch to Northern Uganda, where we've supported three dioceses for over 50 years - funding ordinand training and contributing to church and community development in Kitgum with Tearfund. We also support long-term mission partners working with Wycliffe Bible Translators. Occasionally, we back short-term mission trips from our congregation.

OUR COMMUNITY PARTNERSHIPS

A COMMITTED FAMILY SERVING CHRIST TOGETHER

At Christ Church Clifton, our new vicar will be welcomed into a highly motivated and supportive Staff Team. While we may be small in number, we are flexible, agile, and deeply committed to living out our values in everything we do.



OUR SENIOR LEADERSHIP TEAM CONSISTS OF:

- ♦ **Chris Brown, Associate Vicar** – With a heart for discipleship and pastoral care and a long history at Christ Church, Chris brings passion and experience in ministry and mission.
- ♦ **Janet Lee, Assistant Minister** – A self-supporting minister working three days a week, Janet oversees our 8am and Midweek Gatherings and leads our ministry with older adults.
- ♦ **Mark Parsons, Operations Manager** – With 12 years in the role, Mark keeps the church's organisational and practical heartbeat strong and steady.

SUPPORTING OUR MISSION - THE WIDER STAFF TEAM:

- ♦ Executive Assistant (p/t)
- ♦ Life Events Administrator (p/t)
- ♦ Buildings Manager
- ♦ Schools Pastor (p/t)
- ♦ Youth Pastor (p/t)
- ♦ Students and Young Adults Pastor (p/t)
- ♦ Children's and Families Pastor (Vacancy)
- ♦ Children's Ministry Administrator (p/t)



A CULTURE OF CONNECTION AND PRAYER

Our staff team values community and spiritual support. We meet weekly for lunch, catch-up, and mutual encouragement. Each morning begins with a staff huddle – time spent in the Word and prayer to centre our day.

Our open-plan offices at Linden Gate foster collaboration, creativity, and ongoing connection throughout the day.

JOIN OUR STAFF TEAM



FINANCE

For the past few years our finances are overseen by a team of five people, comprising the operations manager and four others, all of whom have relevant qualifications and/or business experience. The team reports to the PCC every three months and two of the team are PCC members (in addition to the operations manager who also attends PCC meetings). This system works smoothly and effectively.

Like many churches we have experienced some difficult years latterly, through COVID and the resulting reduction in regular attendance and giving, plus the loss of some rental income while a property was being sold. However, our finances have now stabilised, not least because we are now benefiting from the interest on the sale proceeds of that property. Growing our income base remains a priority for us.

Over the last couple of years we have achieved healthy surpluses enabling us to rebuild our reserves to £259,000 at the end of 2024, equivalent to about 6 months' expenditure and enabling us to set a deficit budget of £19,000 for 2025. Whilst this is clearly not sustainable for the long term, we are comfortable with the deficit over the short term, in order to facilitate the necessary work to re-grow our staff team as we seek to implement our vision.

In 2021, we completed a major refurbishment of our crypt at a cost of around £1.8 million. This was funded largely from the sale proceeds of a property that had been sold some years earlier and also by some legacies and the generous giving of our church family. There is no outstanding debt remaining from this project.

For more information, please see our annual report and accounts for 2024 at ccweb.org.uk/accounts.

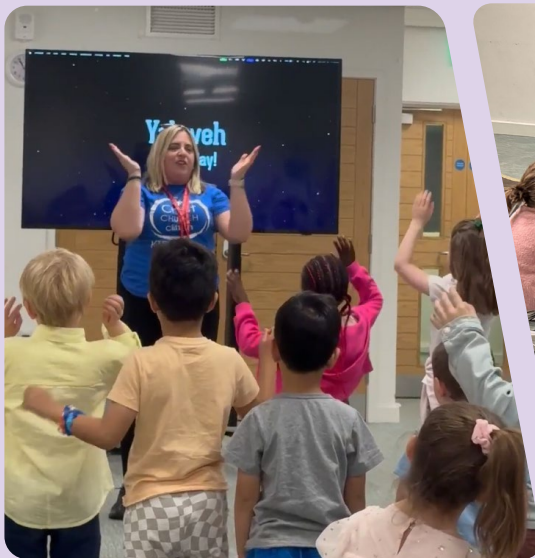
At Christ Church we give paramount importance to the nurture and care of children, young people and vulnerable adults in a safe and secure environment, and work to prevent harm to children and adults wherever possible. Our PCC has adopted the House of Bishop's "Promoting a Safer Church: Safeguarding Policy Statement" and is committed to:

- Promoting a safer environment and culture
- Safely recruiting and supporting all those with any responsibility related to children and vulnerable adults
- Responding promptly to every safeguarding concern or allegation
- Caring pastorally for those who are the subject of concerns/ allegations of abuse and other affected persons
- Responding to those that may pose a present risk.

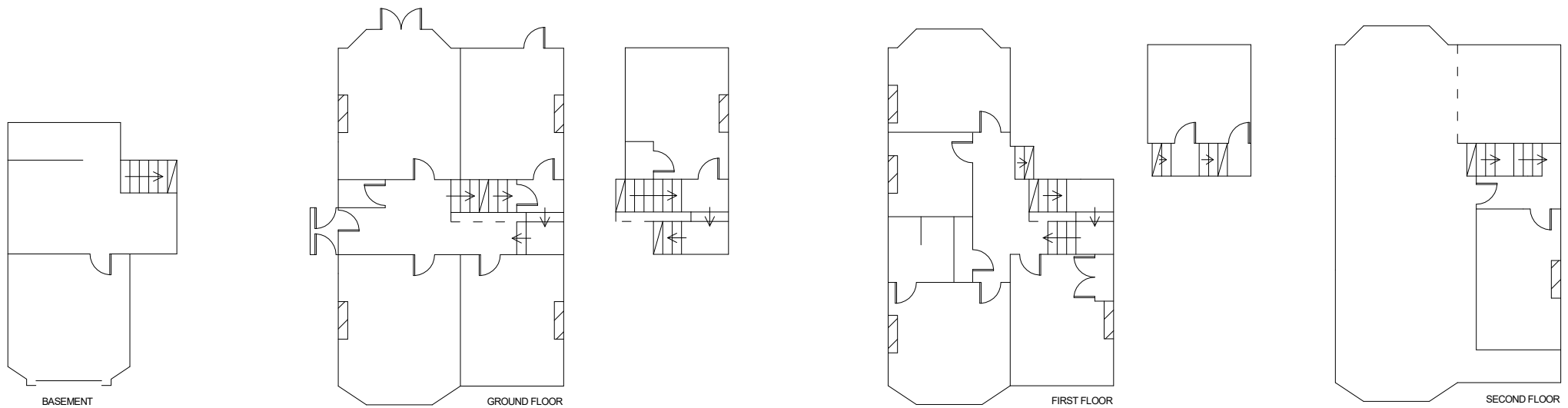
To uphold this commitment, we have appointed four Parish Safeguarding Officers – two focusing on children and two on vulnerable adults. Safeguarding is a standing agenda item at every PCC meeting ensuring ongoing vigilance and accountability.

All staff and volunteers who work with children, young people or vulnerable adults are recruited safely (including DBS checks where appropriate) and undertake Diocesan approved safeguarding training on a regular basis. Safer recruitment and training is overseen by our Operations Manager.

The PCC's Safeguarding Policy and Guidance Notes for staff and volunteers are available on the safeguarding page of our website.



SAFEGUARDING



The Vicarage is a 6 bedroom Victorian semi-detached house with a basement garage, mature garden and off-street parking. It is located a 10-minute walk from Christ Church in a leafy residential street in the parish of All Saints, Clifton.



THE VICARAGE

Christ Church Clifton **IN NUMBERS**

AVERAGE ATTENDANCE (YEAR TO 30 JUNE 25)

25

The 8

156

Adults The 10

38

Kids

48

The Midweek

CHRISTMAS 2024

13

Services
and Events



2,683

Total
Attendance

GIVING AND EXPENDITURE



Planned
Giving

Number of
Givers

Total
Expenditure

2022

£390k

202

£548k

2023

£389k

187

£492k

2024

£346k

175

£515k

PARISH SHARE 2024



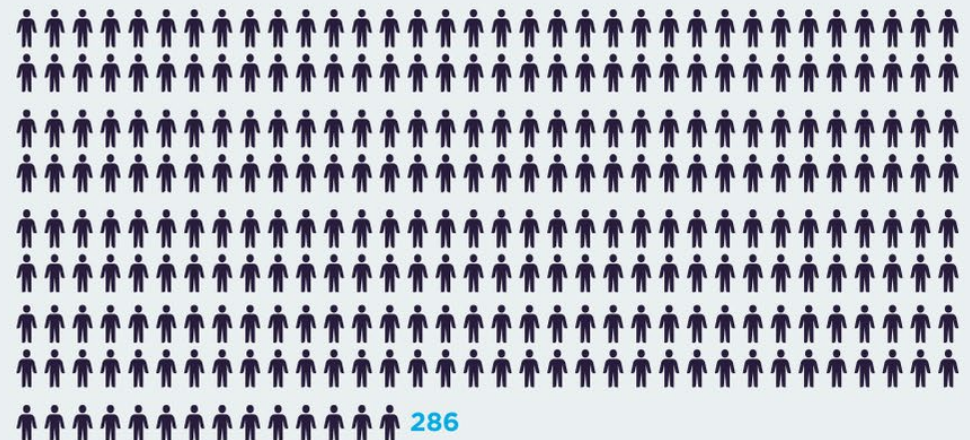
£164,323.90



LIFE EVENTS 2024



ELECTORAL ROLL 2025



IS GOD CALLING YOU TO CHRIST CHURCH CLIFTON?

At Christ Church, we are praying for a leader who loves Jesus, listens to the Spirit, and is passionate about equipping the whole church for mission. This person will walk closely with God, lead confidently with humility, and share our desire to see lives transformed through the power of the gospel. They will be collaborative in approach, rooted in Scripture, and open to the dynamic leading of the Holy Spirit.

QUALIFICATIONS/ TRAINING

Essential

- ♦ Ordained priest within the Church of England, or a Church in communion with it, or a Church whose orders it recognises.
- ♦ Has proven leadership experience at a senior level.
- ♦ Has the right to live and work in the United Kingdom.
- ♦ Willing to undergo and pass an Enhanced DBS check.

EXPERIENCE

Essential

- ♦ Proven leadership experience with the ability to recognise, equip and release the gifts of others.
- ♦ Experience of leading a church deeper into dependence on the Holy Spirit, encouraging the use of spiritual gifts in worship, prayer, and ministry.
- ♦ A disciple-maker who fosters both mature spiritual growth and nurtures new faith.
- ♦ Experienced in equipping believers to live missionally in their daily lives.
- ♦ Has helped develop a culture of prayer as central to church life.
- ♦ A track record of helping a church engage with its local community through mission, evangelism and outreach.

Desirable

- ♦ Has served at associate or incumbent level in a medium to large church.
- ♦ Experience as a Training Incumbent for curates.
- ♦ Experience of engaging with the wider CofE especially representing evangelical views.
- ♦ Experience of leading and training others in prayer ministry.
- ♦ Experience of working with young professionals, young families and university students.

PERSON SPECIFICATION

KNOWLEDGE/ SKILLS AND COMPETENCIES

Essential

- ♦ A gifted leader - relationally mature and emotionally secure — able to build trust, motivate teams, and lead in complex contexts .
- ♦ Deep scriptural understanding with the ability to relate biblical truth to contemporary life and culture.
- ♦ A confident communicator who connects, listens, and equips others through relevant, engaging biblical teaching and ongoing discipleship.
- ♦ Spiritually discerning, with the ability to discern what the Holy Spirit is saying to the church.
- ♦ Able to work flexibly and collaboratively with others in a busy and complex environment in a shared leadership culture.

Desirable

- ♦ Naturally pastoral and approachable, who encourages, listens, and navigates conflict with empathy and grace.
 - ♦ Has a sense of humour and can bring joy to the community.
-

PERSONAL ATTRIBUTES

Essential

- ♦ Someone who loves Jesus and is empowered by the Holy Spirit .
 - ♦ Lives a lifestyle of personal discipleship.
 - ♦ A deep commitment to and love for the local church as the body of Christ.
 - ♦ Believes in the priesthood of all believers and to the ministry of the whole family.
 - ♦ Committed to sharing leadership at senior leadership level.
 - ♦ Theologically evangelical, committed to:
 - ♦ orthodox biblical teaching.
 - ♦ women in leadership.
 - ♦ a traditional view of marriage.
 - ♦ Word and Spirit theology and ministry.
 - ♦ Agrees with the CEEC basis of faith.
 - ♦ Committed to involvement in the Diocesan Evangelical Fellowship.
 - ♦ Aligned with the New Wine vision and values and willing to embrace our continued involvement in the New Wine family of churches. <https://www.new-wine.org/about>
-

DIVERSITY AND INCLUSION

We are committed to building a church that reflects the richness and diversity of our city. We welcome applications from candidates of UKME (UK Minority Ethnic) or GMH (Global Majority Heritage) backgrounds and are striving to cultivate a church culture where everyone feels invited, valued, and at home.

NEXT STEPS

Thank you for reading this far, we are praying that our profile has helped in your discernment. We pray too that God is putting a deep sense of call into the heart of the person who will be our next Vicar.

The patrons of Christ Church Clifton are Simeon's Trustees. If you would like an informal conversation about this role then please contact The Revd Richard Wilson: richard.wilson@simeons.org.uk.

Simeon's Trustees use the Church of England Pathways recruitment process. To apply for this role please visit: www.cofepathways.org or www.simeons.org.uk/vacant-parishes



DIOCESE OF BRISTOL

TRANSFORMING CHURCH. TOGETHER.

Diocesan Office, First Floor, Hillside House, 1500 Parkway North, Stoke Gifford, Bristol BS34 8YU 0117 906 0100 | www.bristol.anglican.org
The Bristol Diocesan Board of Finance Limited | Reg. in England: Charity 248502, Company 156243

